

Washington County Park and Open Space Plan: 2035 Fact Sheet

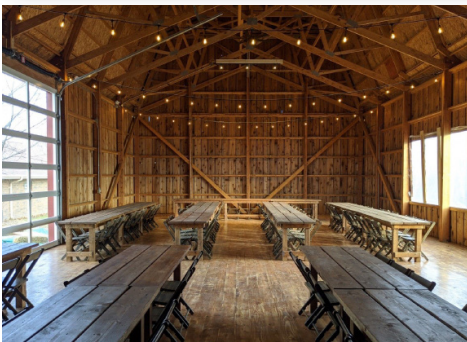


Washington County Owned Major Parks & Outdoor Sites

- Ackerman's Grove County Park
- Washington County Golf Course/Family Park
- Glacier Hills County Park
- Heritage Trails County Park
- Homestead Hollow County Park
- Sandy Knoll County Park
- Goeden County Park
- Henschke Hillside Lake Access
- Joseph P. Marx Woods and Nature Preserve
- Leonard J. Yahr County Park
- Isadore and Lorraine Spaeth County Park

Guiding Principles for Park and Open Space Plan

- Striving to achieve financial sustainability of the park system maintenance operations
- Creating partnerships that enhance maintenance, education and recreation of the County Park and Trail System.
- Maintaining and improving our priority parks, trails, natural areas and operations in a fiscally responsible manner.
- Supporting strategic park acquisitions and expansions of priority parks.
- Developing an expanded and interconnected multi-use trail system.
- Promoting and marketing the power of parks and trails to increase their use by individuals and families. Parks and trails have health, economic, environmental and social benefits for all County residents and visitors.



Alignment with County Strategic Priorities

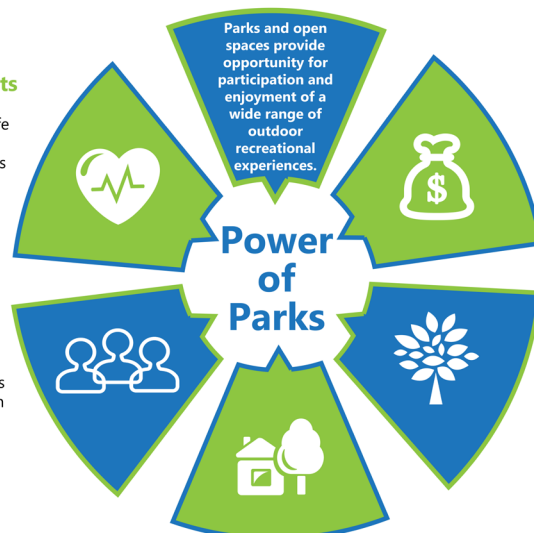
As part of the 2035 planning process, each of the recommendations from the 2020 plan that had not been implemented were identified and reviewed for consistency and alignment with the 2017-2019 Strategic Priorities for the Quality of Life of the Citizens of Washington County developed by the Washington County Board of Supervisors. Plan adopted by County Board on April 21, 2020.

Individual Benefits

- Improves physical health and quality of life
- Helps build and maintain healthy bones
- Promotes physical and psychological well being

Social Benefits

- Creates safer neighborhoods
- Opportunities for interaction
- Increases awareness of natural environment



Community Benefits

- Creates strong communities and opportunities
- Improves quality of life

Washington County Park and Open Space Plan: 2035 Fact Sheet



Population Projection & Needs

The need for outdoor recreation sites and facilities within the County is determined by applying the standards for the size, number, and spatial distribution of public parks and outdoor recreation facilities to the existing and anticipated future resident population and distribution within the County, and comparing the probable demand for such sites and facilities. The 2016 County population was 134,137 persons. The number of County residents anticipated by the year 2035 based upon forecasts range from 157,265 persons to 176,100.



Bikeway and Trail Network

The Washington County Bikeway & Trail Network Plan, adopted by the County Board on June 12, 2019 will help guide the County as it makes investments in bikeways and trail corridors. At full build-out, there will be 348 miles of bikeway and trails including 72 miles of trails, 81 miles of side paths, and 195 miles of on-street treatments such as marked bike routes, bike lanes and paved shoulders. In addition to the adopted recommendations outlined the Bikeway & Trail Network Plan:

- It is recommended that a trail connection be planned between Sandy Knoll County Park and Leonard J. Yahr County Park. A side path or bike lane should be constructed as County highways and town roads are reconstructed.
- It is recommended that at such time that State Highway 33 and County Highway M intersection is planned for reconstruction, a safe bike and pedestrian crossing is designed to connect Goeden County Park to Priority Corridor #3.
- It is recommended that at such time Priority Corridor #2 is constructed along County Highway P, appropriate facilities are considered for Isadore and Lorraine Spaeth County Park.

Lake and River Access

The regional park and open space plan recommends that rivers and major lakes, lakes with a surface area of 50 acres or more, be provided with adequate public boat access consistent with safe and enjoyable participation in various boating activities.

The following major lakes in Washington County had inadequate or no access provided which met Department standards: Barton Pond, Lake Five and Lucas Lake.

It is recommended that:

- Public boat access sites at Lake Five and Lucas Lake be expanded or acquired and developed as appropriate by the Wisconsin Department of Natural Resources.
- A public boat access site at Barton Pond be developed as appropriate by the City of West Bend.



Washington County Park and Open Space Plan: 2035 Fact Sheet



Accessibility

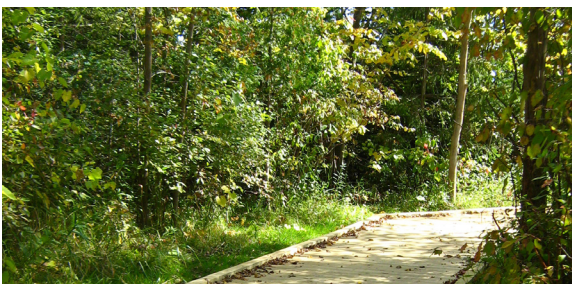
The Americans with Disabilities Act of 1990 was passed prior to the purchase and development of four Washington County Parks and Facilities (Leonard J Yahr County Park, Ackerman's Grove County Park, Henschke Hillside Lake Access, and the Eisenbahn State Trail). These four parks and facilities were developed and designed utilizing ADA Standards and are therefore generally more ADA accessible than older County Parks (Glacier Hills, Heritage Trails, Sandy Knoll, and Homestead Hollow). Older parks were developed prior to enacted ADA Standards.

All development projects and renovations completed in the County parks since 2010 have followed the new 2010 ADA Standards for Accessible Design. Renovations of older facilities to ADA Standards are gradual due to budgeting challenges. Renovation plans will be reviewed and updated as part of the Park and Trail Fiscal Sustainability Plan update as the County continues to comply with ADA Standards.

Public Engagement

A series of public outreach efforts and two primary surveys were conducted to gather public opinion and ensure that implementation of this park and open space plan is truly reflective of the wants and needs of Washington County residents.

The Plan was made under the guidance of the Washington County Park and Open Space Plan Technical Advisory Commission (TAC). The TAC was established to guide the preparation of the Plan, review Plan chapters, and identify recommendations for Plan goals, objectives, and actions.



Maintenance Recommendations

The Park and Trail System is currently developing an Operational & Maintenance Plan which will outline natural resource management and facility and infrastructure operation and maintenance. As we continue to add new amenities, additional staffing resources will be vital in keeping expected levels of maintenance.

Stewardship Recommendations

It is recommended that the following stewardship efforts be implemented: development of a Park System Operational & Maintenance Plan, Natural Resource Management & Restoration Plan for each park, Mapping inventory, ground verification and ecological inventory, identify existing and potential invasive threats, prioritize areas, identify management practices, plans, and schedules, and natural resource management intern to lead small seasonal crew, and development of Parks Volunteer Plan.



Washington County Park and Open Space Plan: 2035 Fact Sheet



Park and Outdoor Recreation Element Recommendations

The Plan recommends additional land and provide additional facilities at Glacier Hills, Heritage Trails, and Leonard J. Yahr County parks. These additions are recommended to advance the sustainability of the park and trail system and add to the quality of life for County residents.

The Plan also recommends that Washington County provide two new County parks. The first park to be a major park in the County; a 120-acre park in the northwestern portion of the County, including St. Anthony Beech Woods Natural Area, and the second park to be located on Big Cedar Lake.



Open Space Preservation Element Recommendations

- It is recommended that a total of 70,115 acres of open space lands be protected through public or nonprofit conservation organization ownership, conservation easements, or through the application of protective zoning.

Acquisition and Development Costs

The acquisition and development costs related to County owned parks envisioned under the plan are estimated at about \$10.5 million. Of this amount, about \$1.2 million, would be required for the acquisition of additional park lands, \$1.5 million for outdoor preservation, \$930,000 for residential, commercial and transportation uses, and about \$6.7 million, would be required for the development of County park land.

Organizational Improvements

- Foster an evolving and adaptive workforce
- Facilitate public engagement that delivers an understanding of the highest priorities of our residents
- Create an environment for strong intergovernmental relations and public-private partnerships
- Brand development and marketing
- Evaluate park user fee
- Pursue sponsorships and naming rights
- Master plan priority parks

